

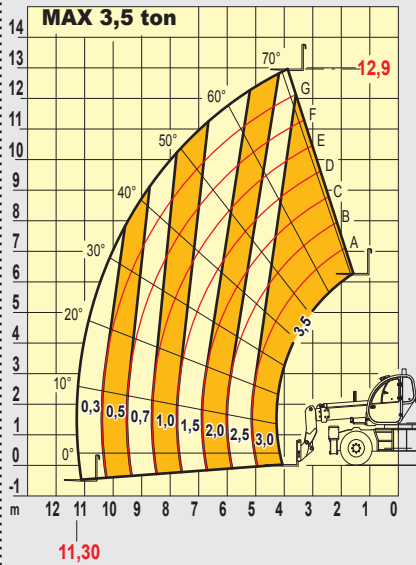
# Pegasus

35.13

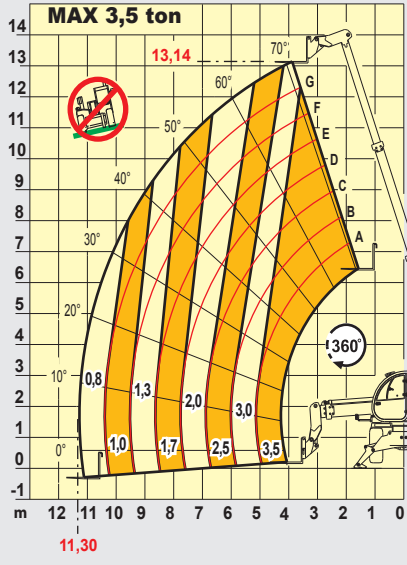


*macchine edili ed agricole*  
S.r.l.  
**d DIECI**

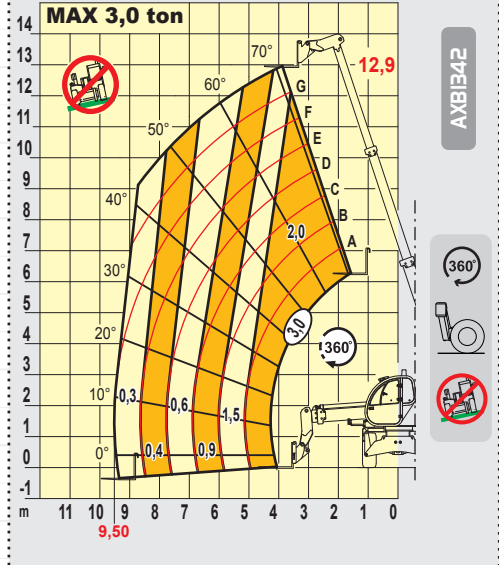
# Pegasus 35.13



AXB1342/I2



AXB1342/I



AXB1342



## PERFORMANCES

Maximum capacity:..... 3.500 kg  
 Capacity at maximum height on stabilizers:..... 3.000 kg  
 Capacity at maximum height on tyres:..... 2.500 kg  
 Maximum capacity boom on stabilizers:..... 800 kg  
 Maximum capacity boom on tyres:..... 300 kg  
 Maximum lifting height on stabilizers:..... 13,14 m  
 Maximum lifting height on tyres:..... 12,90 m  
 Maximum horizontal boom extension:..... 11,30 m  
 Boom at maximum height:..... 3,90 m  
 Angle of fork arching:..... 134°  
 Tearing force:..... 5.700 daN  
 Towing force:..... 7.300 daN  
 Maximum slope for overtaking:..... 40 %  
 Total empty weight:..... 13.440 kg  
 Max speed:..... 40 km/h



## TRANSMISSION

Transmission:..... Hydrostatic with variable capacity pump  
 Hydraulic engine:..... with automatic change  
 Gear reversing:..... Electro - hydraulic  
 Inching pedal for controlled forward movement  
 2 speed power steering.



## HYDRAULIC CIRCUIT

Gear pump with capacity at speed:..... 135 lt/1'  
 Max working pressure:..... 230 bar  
 Distributor controls with joystick:..... 5 in 1 proportional



## DIFFERENTIAL AXLES

Steering axles:..... 2, with epicycloidal reduction gears  
 Type of steering:..... 4 wheels / transversal / 2 wheels  
 Front axle:..... levelling  
 Rear axle:..... oscillating (possibility to block it)  
 Service brake:..... oil bath on 4 wheels double hydraulic circuit, parking brake

Negative parking brake.



## ENGINE

DEUTZ BF4M2012C - TA - 103 kW  
 Maximum power:..... 103 kW (141 cv) a 2500 rpm  
 Operating principle:..... four-stroke engine, diesel  
 Cylinders number and layout:..... 4, vertical in line  
 Displacement:..... 4038 cm<sup>3</sup> -Turbo compressor aftercooler  
 Cooling system:..... liquid



## REFUELLING (litre)

Hydraulic circuit:..... 245  
 Fuel tank:..... 126



## STANDARD DEVICES

Hydraulic movements with Danfoss proportional distributor.  
 Anti-tipping device with block for hazardous movements.  
 Continuous turret rotation over 360°.  
 Oscillation block on rear axle.  
 Hydraulic socket for possible accessories on boom head.  
 Closed soundproof homologated cab FOPS, with heating.  
 Stabilizers.



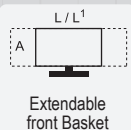
## TYRES

Tyres:..... 19,5"

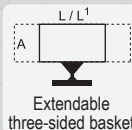


## OPTIONAL AND ACCESSORIES

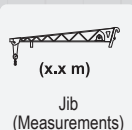
Optional and Accessories:..... see the relevant catalogue.



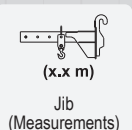
Extendable front Basket



Extendable three-sided basket



Jib (Measurements)



Jib (Measurements)



Continuous rotation



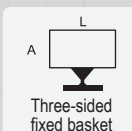
Front position



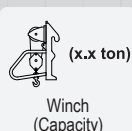
Stabilizers raised



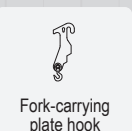
Front fixed basket



Three-sided fixed basket



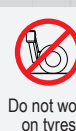
Winch (Capacity)



Fork-carrying plate hook



Non-continuous rotation



Do not work on tyres



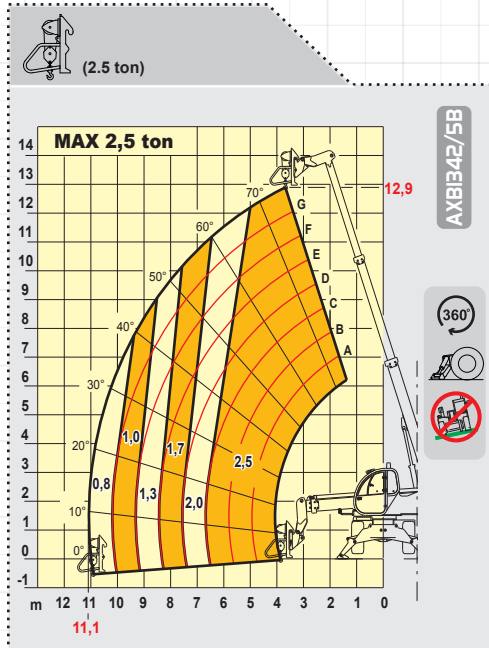
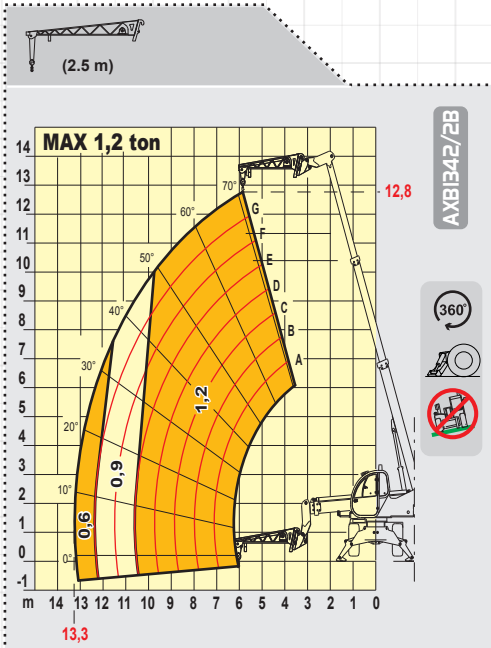
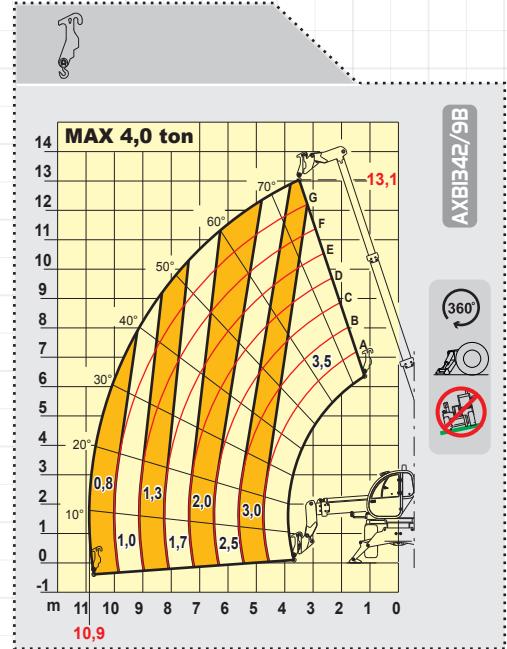
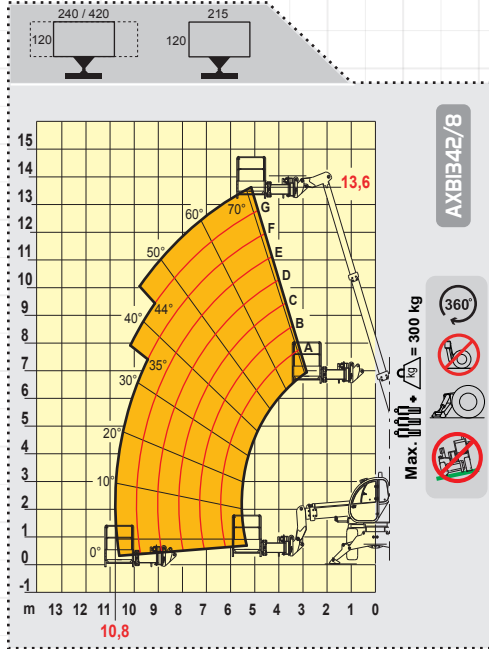
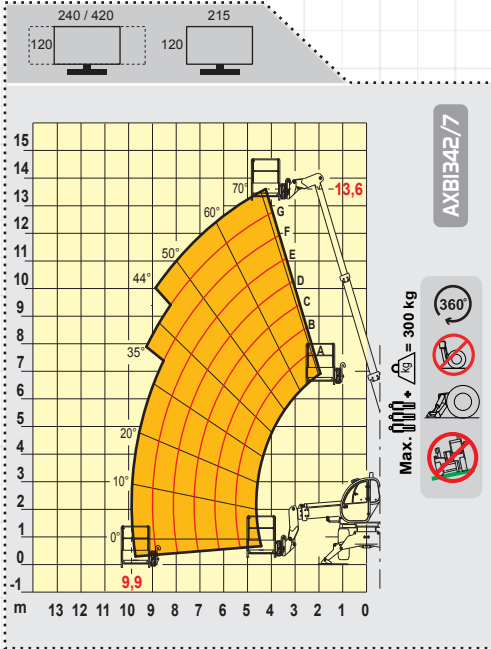
Stabilizers lowered

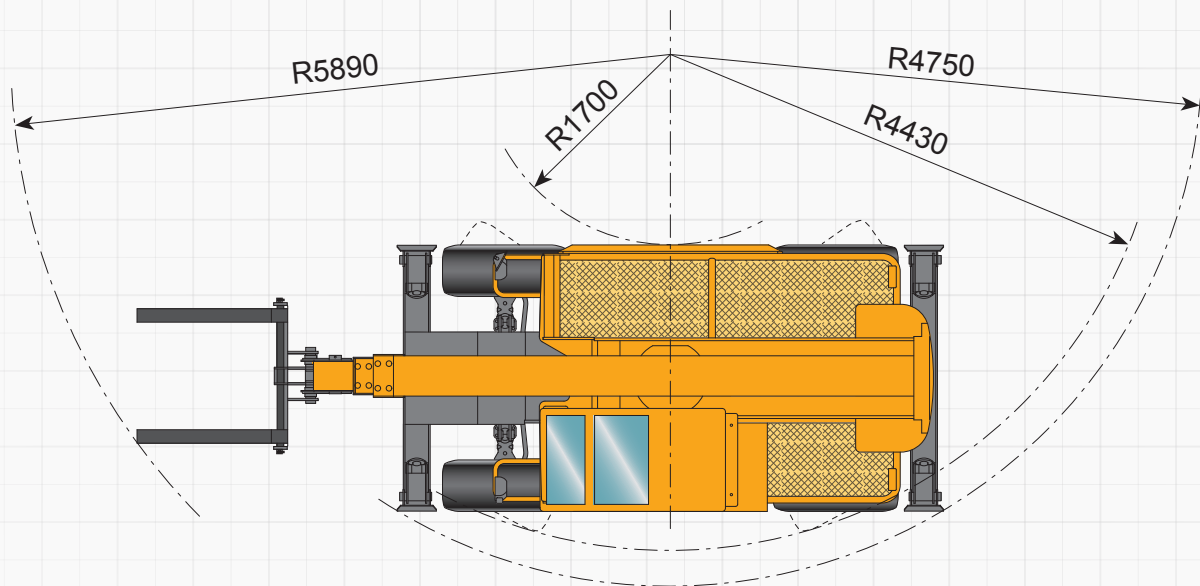
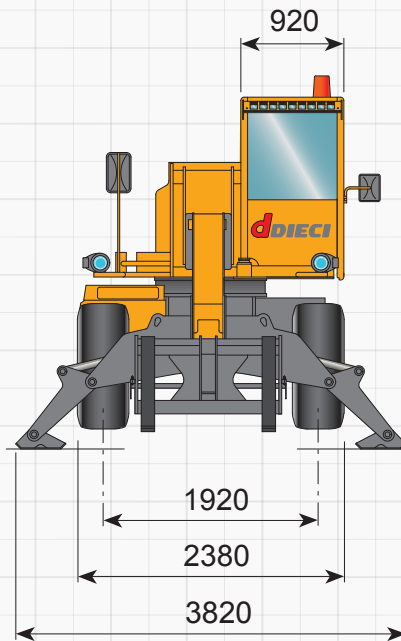
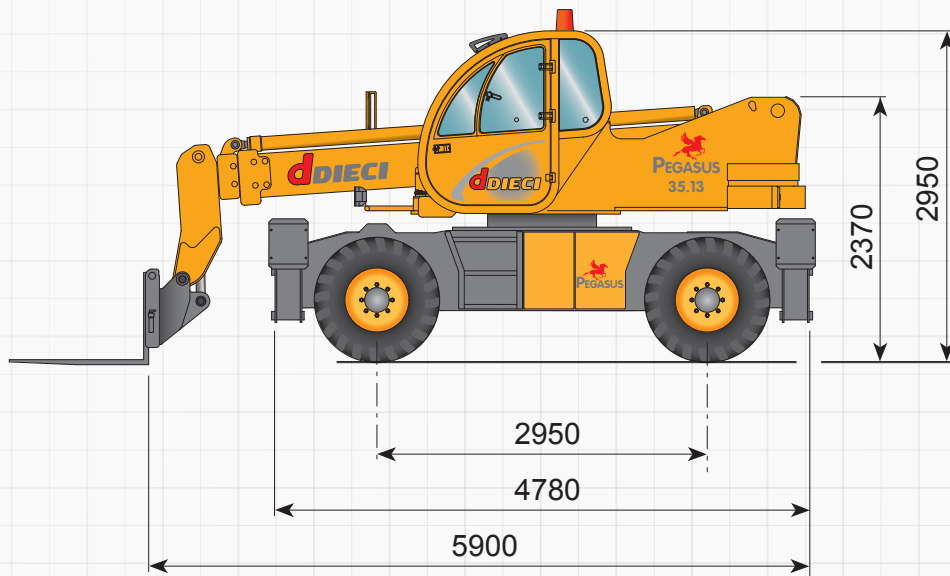
## SYMBOLS KEY



DO NOT maneuver if the machine is NOT levelled

# Equipments





I dati contenuti in questo stampato sono forniti a titolo indicativo; i modelli descritti sono suscettibili di modifiche, senza preavviso, da parte del costruttore, disegni e fotografie possono riferirsi a equipaggiamenti opzionali o ad allestimenti destinati ad altri paesi. Per ogni altra informazione, rivolgersi alla sede DIECI all'indirizzo a fondo scheda.  
 The information contained in the present publication are only intended as an indication; the models described may be modified, without notice, by the manufacturer, drawings and photographs may refer to optional equipment or to particular specifications for other countries. For any further information, please contact DIECI headquarters at the address given below.

(Cod. AXE3087 - 3/2006 v0)

**DIECI S.r.l.**  
 Via E. Majorana, 2/4 - 42027 Montecchio Emilia (RE)  
 Tel. +39 0522 869611 - Fax +39 0522 869744  
 www.dieci.com - mailbox@dieci.com

